

AMERICANS WITH DISABILITIES ACT (ADA) TRANSITION PLAN FOR PUBLIC FACILITIES

City of Tipton, Indiana



**216 S Main Street
Tipton, IN 46072**

September 26, 2022

TABLE OF CONTENTS

1. INTRODUCTION	2
2. TRANSITION PLAN DEVELOPMENT	3
A. ADA COORDINATOR	3
B. GRIEVANCE PROCEDURE	4
C. SELF-EVALUATION/COMMITMENT/SCHEDULE	5
D. ADA STANDARDS AND GUIDELINES	5
3. PUBLIC INVOLVEMENT	6
4. IMPLEMENTATION	6

APPENDICES

APPENDIX A: COMPLAINT/GRIEVANCE FORM	7
APPENDIX B: BUILDING AND STRUCTURE REVIEW	9
APPENDIX C: SIDEWALK AND CURB RAMPS REVIEW	20

INTRODUCTION

The Americans with Disabilities Act (ADA) was enacted on July 26, 1990, and later amended effective January 1, 2009. As written and implemented, the ADA provides comprehensive civil rights protections to persons with disabilities in the areas of employment, state and local government services, access to public accommodations, transportation, and telecommunication. The ADA is a companion civil rights legislation to the Civil Rights Act of 1964 and Section 504 of the Rehabilitation Act of 1973. To be protected by the ADA, one must have a disability or have a relationship or association with an individual with a disability. An individual with a disability is defined by the ADA as a person who has a physical or mental impairment that substantially limits one or more major life activities, a person who has a history or record of such impairment, or a person who is perceived by others as having such impairment. The ADA, however, does not specifically name all the impairments that are covered. The ADA is divided into five sections covering the following topics:

Title I: Employment

Title II: Public Services (and Transportation)

Title III: Public Accommodations (and Commercial Facilities)

Title IV: Telecommunications

Title V: Miscellaneous Provisions

Title II specifically prohibits state and local governments from discriminating against persons with disabilities or from excluding participation in or denying benefits of programs, services, or activities to persons with disabilities. It is under this title that this transition plan has been prepared. This transition plan is intended to outline the methods by which physical changes should be made to give effect to the non-discrimination policies described in Title II.

TRANSITION PLAN DEVELOPMENT

To ensure program accessibility for people with disability in the community, the City of Tipton has developed a Transition Plan, which is to be considered good practice.

This Transition Plan for Public Facilities considers the following:

A. ADA COORDINATOR:

Effective communication is essential to address all the complaints or concerns of all individuals. To keep the lines of communication open, and thereby ensure effective communication between all parties, the City of Tipton has appointed the following person as the ADA Coordinator:

City of Tipton

Michael Terry, ADA Coordinator

216 S Main Street

Tipton, IN 46072

Phone: (765) 675-3331

Email: publicworksmgr@tipton.in.gov

The ADA Coordinator shall coordinate the City's efforts to comply with and carry out its responsibilities under Title II of the ADA, including any investigation of any complaint communicated to the ADA coordinator. Such complaints may take the form of alleging noncompliance with ADA mandates or alleging any actions that would be prohibited under ADA. The City shall make available to all interested individuals the name, office address, and telephone number of the employee(s) so designated and shall adopt and publish procedures for the prompt and equitable resolution of complaints. Every complaint must be directed in writing to the ADA Coordinator.

B. GRIEVANCE PROCEDURE

The grievance procedure established below is intended to adhere to the standards outlined in the ADA. The procedure must be used by anyone who wishes to file a complaint alleging discrimination on the basis of disability in the provisions of services, activities, programs, or benefits provided by the City of Tipton. The complaint should be in writing and contain information about the alleged discrimination such as name, address, phone number of the complainant and location, date, and description of the problem. An example grievance form can be found in Appendix A of this document. Alternative means of filing complaints, such as personal interviews or recordings of the complainant will be made available for persons with disabilities upon requests. The complaint should be submitted by the grievant and/or his/her designee as soon as possible but no later than 180 calendar days after the alleged violation to the ADA Coordinator at the address shown under 'A. ADA COORDINATOR' on page 3. Within 15 calendar days after receipt of the complaint, the ADA Coordinator or his/her designee will meet with the complainant to discuss the complaint and the possible resolutions. Within 15 calendar days of the meeting, the ADA Coordinator or his/her designee will respond in writing, and where appropriate, in a format accessible to the complainant, such as large print, Braille, or audio tape. The response will explain the position of the City of Tipton and offer options for substantive resolution of the complaint. If the response by the ADA Coordinator or his/her designee does not satisfactorily resolve the issue, the complainant or his/her designee may appeal the decision within 15 calendar days after receipt of the response to the ADA Coordinator or his/her designee. Within 15 calendar days after receipt of the appeal, the ADA Coordinator or his/her designee will meet again with the complainant to discuss the appeal and possible resolutions. Within 15 calendar days after the meeting, the ADA Coordinator or his/her designee will respond in writing, and, where appropriate, in a format described above that is accessible to the complainant, with a final resolution of the complaint. All written complaints received by the ADA Coordinator or his/her designee, appeals to the ADA Coordinator or his/her designee, and responses from ADA office will be retained by the City of Tipton for at least three years.

C. SELF-EVALUATION/COMMITMENT/SCHEDULE

HWC Engineering, acting as a representative of the City of Tipton, has performed a cursory review of all city-owned properties and structures for ADA compliance. The results of this evaluation of all the city-owned properties and structures can be found in Appendix B. HWC Engineering, acting as representative of the City of Tipton has also performed a review of all sidewalks and curb ramps for ADA compliance. The results of this evaluation will be found in Appendix C.

The City is committed to making sidewalks, curb ramps, public areas and city-owned facilities accessible to all pedestrians including those with disabilities. This will be accomplished through the following programs:

- All new construction, reconstruction, road construction or alterations, including federal projects under the control and/or inspection of the City of Tipton will be in compliance with ADA.
- Buildings and municipal-owned structures will be brought into compliance as funds are available. Specific complaints will be prioritized.

D. ADA STANDARDS/GUIDELINES

The standards are intended to apply to all construction undertaken within the City Right-of-Way. For sidewalks within the city right-of-way, the “Proposed Accessibility Guidelines for Pedestrian Facilities in the Public Right-of-Way” (PROWAG) should be used. For buildings and facilities, the “ADA Accessibility Guidelines for Buildings and Facilities” (ADAAG) should be used. Other standards, if necessary, will be applied at the discretion of the ADA Coordinator.

PUBLIC INVOLVEMENT

On April 5, 2022, at the Board of Works meeting, the City entered into contract with a consultant to provide a self-evaluation of the public rights-of-way and facilities and an ADA Transition Plan. At that time, the City began openly discussing in public format the ADA Transition Plan. The Board of Works meets every Second and Fourth Monday of every month at 12:00pm. At the September 12, 2022, Board of Works meeting the consultant presented and discussed the draft ADA Transition Plan including self-evaluation. At that time, the draft document became public record and available for a two week review and comment period. On September 26, 2022, the consultant presented the final ADA Transition Plan including self-evaluation and the board approved it.

IMPLEMENTATION

The City approved the ADA Transition Plan in public forum at the Board of Works meeting on September 26, 2022. Implementation of the plan began on that date. Not only does the City commit to following the guidelines set forth in this Transition Plan but it also commits to actively revising and amending this document as new information is discovered. Further, as a matter of policy, this document will be updated at least every three years. Finally, a copy of this document has been placed on file at the City Hall, with the ADA coordinator.

APPENDIX A: COMPLAINT / GRIEVANCE FORM

Grievant Information:

Grievant Name:			
Address:	City:	State:	Zip Code:
Phone:	Email:		
Alternative Phone:			

Person Preparing Complaint Relationship to Grievant (if different from Grievant):

Grievant Name:			
Address:	City:	State:	Zip Code:
Phone:	Email:		
Alternative Phone:			

Please specify any location(s) related to the complaint or grievance (if applicable):

Please provide a complete description of the specific complaint or grievance:



Signature: _____

Date: _____

Date: _____

Upon request, reasonable accommodation will be provided in completing this form or copies of the form will be provided in alternate formats. Contact the ADA Coordinator at the address listed above or via telephone (765)-675-3331.

APPENDIX B: BUILDING AND STRUCTURE REVIEW

BUILDING EVALUATION

The City of Tipton, through its ADA Coordinator and hired consultant, completed a cursory building and structure review. The following sections describe the City's various buildings and ADA facilities.

ADA Requirements	
Item:	Requirement:
Parking Stall	96" Min. Width
Parking Aisle Width	96" Min. Width
Ramp	48" Min. Width
Ramp Handrails	34" – 38" Height
Ramp Slope	1:12 Max. Running Slope 1:48 Max. Cross Slope
Door Openings	32" Min. Width
Bathroom Stall Door Opening	32' Min. Width
Bathroom Stall Dimensions	56" DEEP x 60" WIDE
Grab Bars	33" - 36" Height
Urinals	17" Max. Height
Toilet Seat	17" – 19" Min. Height
Counter / Sink	34" Max. Height
Towel Dispenser / Dryer	48" Max. Height, 20" Max. Reach Depth
Soap Dispenser	48" Max. Height, 20" Max. Reach Depth
Fountain Spout Outlet	36" Max. Height

FACILITIES EVALUATED

A. Little Gem	11
B. City Building	17
C. City Fire-Police	24
D. Water Company Pole Barn	37
E. Municipal Water Company, Main Building	41
F. CW Mount Center	46
G. Recycling Center	56
H. City Utilities	61
I. Mausoleum	65
J. Wastewater Plant	69
K. Cemetery Office	74
L. Street Department	78

A. Little Gem-202 S Main Street, Tipton IN 46075



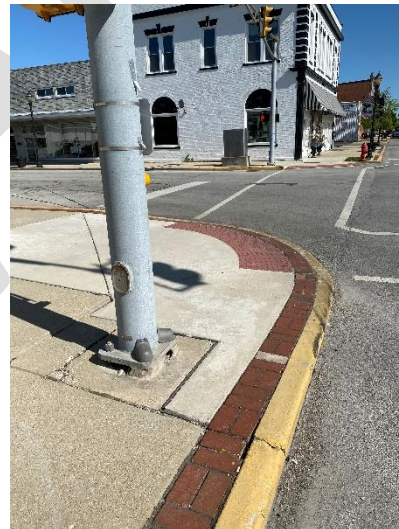
Front Door



Front Door



Northeast Curb Ramp (1)



Northeast Curb Ramp (2)



North Sidewalk



North Sidewalk Obstructions



North Sidewalk (2)



Northwest Curb Ramp



Northwest Curb Ramp (2)



Restroom Door



Restroom Sink



Restroom Toilet

Summary of Facility

For this study, parking stalls, access ramps, general door openings and widths and Restroom were assessed and compared to the required ADA standards. Listed below and highlighted in the tables below are the items that do not meet the ADA requirements.

ADA Non-Compliant Issues

- Restroom door opening under the standard minimum of 32"
- Stall/Restroom Dimensions under the minimum standard of 56" Deep X 60" Wide
- Stairs leading to entrance not ADA compliant

Parking Lot		
Stall Width	Measured	108"
	ADA	96" MIN
Aisle Width	Measured	288"
	ADA	96" MIN
Curb Ramp Width	Measured	N/A
	ADA	48" MIN
Curb Ramp Cross Slope	Measured	N/A
	ADA	2% MAX
Curb Ramp Running Slope	Measured	N/A
	ADA	8.33% MAX
Notes		

Building		
Ramp Running Slope	Measured	N/A
	ADA	8.33% MAX
Ramp Cross Slope	Measured	N/A
	ADA	2% MAX
Ramp Width	Measured	N/A
	ADA	36" MIN
Ramp Handrails	Y/N	N/A
Handrail Height	Measured	N/A
	ADA	34" - 38"
Front Door	Measured	33"
	ADA	32" MIN
Fountain Spout Outlet Height	Measured	N/A
	ADA	36" MAX
Hallway Door Width	Measured	N/A
	ADA	32" MIN
Notes: Stairs leading into both entrances.		

Restrooms		
Door Opening	Measured	23"
	ADA	32" MIN
Stall Door	Measured	N/A
	ADA	32" MIN
Stall/Bathroom Dimensions	Measured	40"x60"
	ADA	56" DEEP X 60" WIDE
Grab Bars	Y/N	N/A
Grab Bar Height	Measured	N/A
	ADA	33" - 36"
Urinals	Y/N	N/A
Urinal Height	Measured	N/A
	ADA	17" MAX
Toilet Seat Height	Measured	21"
	ADA	17" - 19" MIN
Counter/Sink Height	Measured	33.5"
	ADA	34" MAX
Towel/Dryer	Measured	N/A
	ADA	48" MAX HEIGHT, 20" MAX DEPTH
Soap	Measured	N/A
	ADA	48" MAX HEIGHT, 20" MAX DEPTH
Notes: Not in service, no soap or towel dispenser		

B. City Building-216 S Main Street, Tipton, IN 46072



Parking Lot Overview



Parking Lot Overview (2)



Parking Lot Overview (3)



East Sidewalk



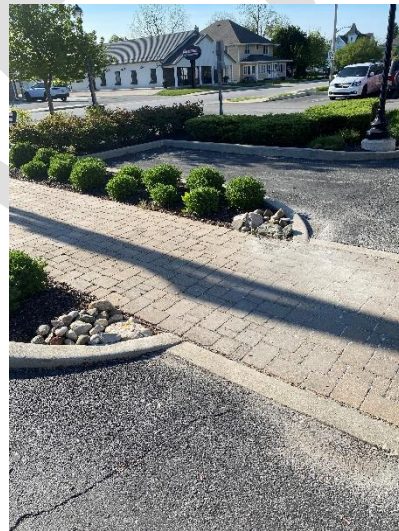
Parking Lot Overview (4)



Parking Lot Overview (5)



Parking Lot Curb Ramp



Parking Lot Curb Ramp (2)



Back Door Curb Ramp



Front of Building



Public Restroom Toilet



Public Restroom Door



Public Restroom Sink



Staff Restroom Door (1)



Staff Restroom Sink (1)



Staff Restroom Toilet (1)



Staff Restroom Door (2)



Staff Restroom Sink (2)



Staff Restroom Toilet (3)

Summary of Facility

For this study, parking stalls, access ramps, general door openings and widths and Restroom were assessed and compared to the required ADA standards. Listed below and highlighted in the tables below are the items that do not meet the ADA requirements.

ADA Non-Compliant Issues

- All items are in compliant with ADA Standards

Parking Lot		
Stall Width	Measured	108"
	ADA	96" MIN
Aisle Width	Measured	288"
	ADA	96" MIN
Curb Ramp Width	Measured	48"
	ADA	48" MIN
Curb Ramp Cross Slope	Measured	0.20%
	ADA	2% MAX
Curb Ramp Running Slope	Measured	2.10%
	ADA	8.33% MAX
Notes		

Building		
Ramp Running Slope	Measured	N/A
	ADA	8.33% MAX
Ramp Cross Slope	Measured	N/A
	ADA	2% MAX
Ramp Width	Measured	N/A
	ADA	36" MIN
Ramp Handrails	Y/N	N/A
Handrail Height	Measured	N/A
	ADA	34" - 38"
Front Door	Measured	60"
	ADA	32" MIN
Fountain Spout Outlet Height	Measured	N/A
	ADA	36" MAX
Hallway Door Width	Measured	33"
	ADA	32" MIN
Notes: shares ramp with City Utilities building		

Restrooms					
		STAFF		PUBLIC	
		Bath 1	Bath 2	Bath 3	Bath 4
Door Opening	Measured	33"	33"	33"	33"
	ADA	32" MIN		32" MIN	
Stall Door	Measured	N/A	N/A	N/A	N/A
	ADA	32" MIN		32" MIN	
Stall/Bathroom Dimensions	Measured	90"x90"	90"x90"	90"x90"	90"x90"
	ADA	56" DEEP X 60" WIDE		56" DEEP X 60" WIDE	
Grab Bars	Y/N	Y	Y	Y	Y
Grab Bar Height	Measured	36"	36"	36"	36"
	ADA	33" - 36"		33" - 36"	
Urinals	Y/N	N/A	N/A	N/A	N/A
Urinal Height	Measured	N/A	N/A	N/A	N/A
	ADA	17" MAX		17" MAX	
Toilet Seat Height	Measured	17"	17"	17"	17"
	ADA	17" - 19" MIN		17" - 19" MIN	
Counter/Sink Height	Measured	33"	33"	33"	33"
	ADA	34" MAX		34" MAX	
Towel/Dryer	Measured	48"x6"	48"x6"	48"x6"	48"x6"
	ADA	48" MAX HEIGHT, 20" MAX DEPTH		48" MAX HEIGHT, 20" MAX DEPTH	
Soap	Measured	33"x16"	33"x16"	33"x16"	33"x16"
	ADA	48" MAX HEIGHT, 20" MAX DEPTH		48" MAX HEIGHT, 20" MAX DEPTH	
Notes					

C. City Fire and Police Building-221-223 E Jefferson Street, Tipton, IN 46072



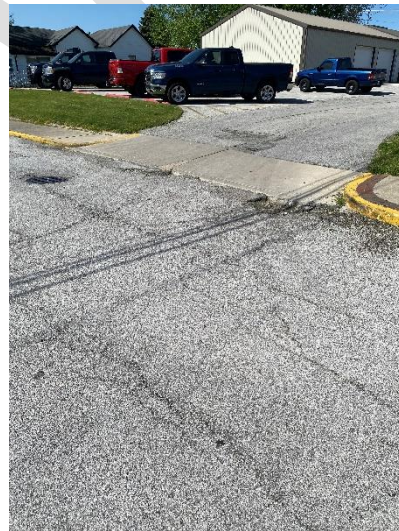
Parking Lot Curb Ramp (2)



Parking Lot Curb Ramp (3)



Parking Lot Curb Ramp (4)



Parking Lot Curb Ramp (5)



Parking Lot



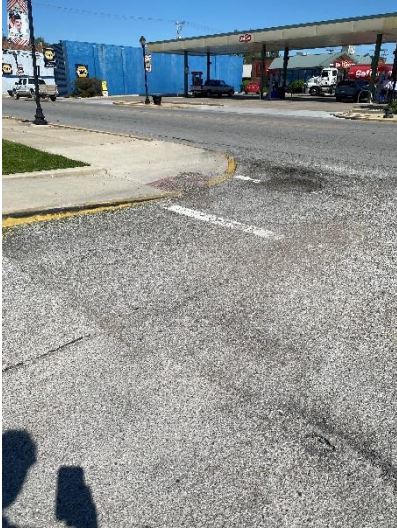
Parking Lot (2)



Parking Lot (3)



Shop Garage Doors



Curb Ramp



Building Curb Ramp



Building Curb Ramp (2)



Alley Curb Ramp



Alley Curb Ramp (2)



Curb Ramp (2)



Northwest Curb Ramp



Northwest Curb Ramp (2)



Front Door and Handrails



Fire Employee Entrance



Police Employee Entrance



Handrails



North Sidewalk



North Sidewalk (2)



North Sidewalk (3)



East Sidewalk



Fire Restroom Overview



Fire Restroom Sink



Fire Restroom Toilet



Men's Restroom Overview



Men's Restroom Toilet



Men's Restroom Sink



Men's Restroom Urinals



Women's Restroom Overview



Women's Restroom Stalls



Women's Restroom Door (2)



Women's Restroom Toilet



Women's Restroom Sink

Summary of Facility

For this study, access ramps, general door openings and widths and Restroom were assessed and compared to the required ADA standards. Listed below and highlighted in the tables below are the items that do not meet the ADA requirements.

ADA Non-Compliant Issues

- Curb Ramp width on Southeast Alley exceeds the 48” minimum width
- Curb Ramp Cross Slope on Southeast Alley exceeds the 2% max
- Curb Ramp Cross Slope on Northeast Sidewalk exceeds the 2% max
- Curb Ramp Cross Slope on the North Sidewalk exceeds the 2% max
- Door opening (Fire Department Unisex Restroom) under the 32” minimum
- Staff Men and Women’s Restroom Stall/Restroom Dimensions does not meet the 56” deep X 60” Wide minimum
- Staff Men’s Restroom urinal height exceeds the 17” max
- Staff Women’s Restroom toilet seat height is under the 17-19” minimum

Parking Lot								
Stall Width	Measured	120"						
	ADA	96" MIN						
Aisle Width	Measured	252"						
	ADA	96" MIN						
Curb Ramp Width	Measured	60"	62"	54"	69"	51"	57"	57"
	ADA	48" MIN	48" MIN	48" MIN	48" MIN	48" MIN	48" MIN	48" MIN
Curb Ramp Cross Slope	Measured	N/A	1.05%	3.05%	0.16%	4.45%	5.35%	1.35%
	ADA	2% MAX	2% MAX	2% MAX	2% MAX	2% MAX	2% MAX	2% MAX
Curb Ramp Running Slope	Measured	N/A	0.23%	0.84%	0.65%	2.10%	5.55%	4.45%
	ADA	8.33% MAX	8.33% MAX	8.33% MAX	8.33% MAX	8.33% MAX	8.33% MAX	8.33% MAX
Notes		Flush with sidewalk	Rear Employee Entrance Ramp	South East Alley South Ramp	South East Alley North Ramp	North sidewalk East Ramp	North sidewalk West Ramp	North West Alley Ramp

Building			
Ramp Running Slope	Measured	2.55%	0.38%
	ADA	8.33% MAX	8.33% MAX
Ramp Cross Slope	Measured	0.81%	2.85%
	ADA	2% MAX	2% MAX
Ramp Width	Measured	59"	59"
	ADA	36" MIN	36" MIN
Ramp Handrails	Y/N	Y	
Handrail Height	Measured	36"	
	ADA	34" - 38"	
Front Door	Measured	60"	
	ADA	32" MIN	
Fountain Spout Outlet Height	Measured	N/A	
	ADA	36" MAX	
Hallway Door Width	Measured	33"	
	ADA	32" MIN	
Notes		NW Building to Parking Ramp	NE Building to Parking Ramp

Restrooms						
		Public Men	Public Women	Staff Men	Staff Women	Fire Dept. unisex
Door Opening	Measured	33"	33"	33"	33"	28"
	ADA	32" MIN		32" MIN		32" MIN
Stall Door	Measured	N/A	N/A	N/A	N/A	N/A
	ADA	32" MIN		32" MIN		32" MIN
Stall/Bathroom Dimensions	Measured	84"x65"	84"x65"	60"x55"	60"x55"	84"x60"
	ADA	56" DEEP X 60" WIDE		56" DEEP X 60" WIDE		56" DEEP X 60" WIDE
Grab Bars	Y/N	Y	Y	Y	Y	N/A
Grab Bar Height	Measured	36"	36"	36"	36"	N/A
	ADA	33" - 36"		33" - 36"		33" - 36"
Urinals	Y/N	N/A	N/A	Y	N/A	N/A
Urinal Height	Measured	N/A	N/A	19"	N/A	N/A
	ADA	17" MAX		17" MAX		17" MAX
Toilet Seat Height	Measured	18"	18"	18"	15.5"	18"
	ADA	17" - 19" MIN		17" - 19" MIN		17" - 19" MIN
Counter/Sink Height	Measured	33"	33"	33"	33"	32"
	ADA	34" MAX		34" MAX		34" MAX
Towel/Dryer	Measured	48"x3.5"	48"x3.5"	45"x4"	45"x4"	48"
	ADA	48" MAX HEIGHT, 20" MAX DEPTH		48" MAX HEIGHT, 20" MAX DEPTH		48" MAX HEIGHT, 20" MAX DEPTH
Soap	Measured	33"x18"	33"x18"	38"x3"	38"x3"	38"x12"
	ADA	48" MAX HEIGHT, 20" MAX DEPTH		48" MAX HEIGHT, 20" MAX DEPTH		48" MAX HEIGHT, 20" MAX DEPTH
Notes						

D. Water Company Pole Barn-224 E North Street, Tipton, IN 46072



Front Door



Front Door (2)



Hallway Door



Restroom Door



Summary of Facility

For this study, access ramps, general door openings and widths and Restroom were assessed and compared to the required ADA standards. Listed below and highlighted in the tables below are the items that do not meet the ADA requirements.

ADA Non-Compliant Issues

- No Parking
- Ramp Cross Slope exceeds the 2% maximum
- Hallway Door Width under the minimum width of 30.5"
- Restroom Door Opening under the minimum 32"
- Urinal height exceeds the 17" maximum
- Toilet Seat Height under the minimum of 17"
- Towel/Dryer exceeds the 48" maximum height

Parking Lot		
Stall Width	Measured	N/A
	ADA	96" MIN
Aisle Width	Measured	N/A
	ADA	96" MIN
Curb Ramp Width	Measured	N/A
	ADA	48" MIN
Curb Ramp Cross Slope	Measured	N/A
	ADA	2% MAX
Curb Ramp Running Slope	Measured	N/A
	ADA	8.33% MAX
Notes: no parking area		

Building		
Ramp Running Slope	Measured	0.47%
	ADA	8.33% MAX
Ramp Cross Slope	Measured	2.10%
	ADA	2% MAX
Ramp Width	Measured	50"
	ADA	36" MIN
Ramp Handrails	Y/N	N/A
Handrail Height	Measured	N/A
	ADA	34" - 38"
Front Door	Measured	33"
	ADA	32" MIN
Fountain Spout Outlet Height	Measured	N/A
	ADA	36" MAX
Hallway Door Width	Measured	30.5"
	ADA	32" MIN
Notes: Stairs leading into front door		

Restrooms		
		Bath 1
Door Opening	Measured	28.5"
	ADA	32" MIN
Stall Door	Measured	N/A
	ADA	32" MIN
Stall/Bathroom Dimensions	Measured	120"x132"
	ADA	56" DEEP X 60" WIDE
Grab Bars	Y/N	N/A
Grab Bar Height	Measured	N/A
	ADA	33" - 36"
Urinals	Y/N	Y
Urinal Height	Measured	26"
	ADA	17" MAX
Toilet Seat Height	Measured	16"
	ADA	17" - 19" MIN
Counter/Sink Height	Measured	32.5"
	ADA	34" MAX
Towel/Dryer	Measured	52"x9"
	ADA	48" MAX HEIGHT, 20" MAX DEPTH
Soap	Measured	32.5"x7"
	ADA	48" MAX HEIGHT, 20" MAX DEPTH
Notes		

E. Municipal Water Co Main Building-322 N. East Street, Tipton, IN 46072



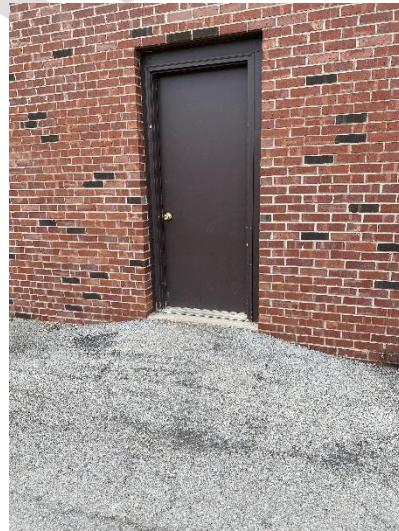
Front Door



East Sidewalk



East Sidewalk



Building Curb Ramp



Restroom Door



Restroom Sink



Restroom Urinal



Restroom Stall



Hallway Door

Summary of Facility

For this study, access ramps, general door openings and widths and Restrooms were assessed and compared to the required ADA standards. Listed below and highlighted in the tables below are the items that do not meet the ADA requirements.

ADA Non-Compliant Issues

- No specific Parking lot, street parking available
- Ramp Running Slope exceeds the 8.3% maximum
- Hallway Door Width under the 32" minimum
- Restroom Stall Door under the 32" minimum
- Stall/Restroom Dimensions under the 56" deep X 60" wide
- Urinal Height exceeds the 17" maximum
- Toilet Seat Height under the minimum of 17"
- Towel/Dryer exceeds the 48" maximum, 20" maximum depth

Parking Lot		
Stall Width	Measured	N/A
	ADA	96" MIN
Aisle Width	Measured	N/A
	ADA	96" MIN
Curb Ramp Width	Measured	N/A
	ADA	48" MIN
Curb Ramp Cross Slope	Measured	N/A
	ADA	2% MAX
Curb Ramp Running Slope	Measured	N/A
	ADA	8.33% MAX
Notes: Street parking		

Building		
Ramp Running Slope	Measured	11.20%
	ADA	8.33% MAX
Ramp Cross Slope	Measured	0.32%
	ADA	2% MAX
Ramp Width	Measured	39"
	ADA	36" MIN
Ramp Handrails	Y/N	N/A
Handrail Height	Measured	N/A
	ADA	34" - 38"
Front Door	Measured	34"
	ADA	32" MIN
Fountain Spout Outlet Height	Measured	N/A
	ADA	36" MAX
Hallway Door Width	Measured	30.5"
	ADA	32" MIN
Notes:		

Restrooms		
		Bath 1
Door Opening	Measured	33"
	ADA	32" MIN
Stall Door	Measured	25"
	ADA	32" MIN
Stall/Bathroom Dimensions	Measured	47"x34"
	ADA	56" DEEP X 60" WIDE
Grab Bars	Y/N	Y
Grab Bar Height	Measured	29"
	ADA	33" - 36"
Urinals	Y/N	Y
Urinal Height	Measured	24"
	ADA	17" MAX
Toilet Seat Height	Measured	16"
	ADA	17" - 19" MIN
Counter/Sink Height	Measured	31"
	ADA	34" MAX
Towel/Dryer	Measured	55"x9"
	ADA	48" MAX HEIGHT, 20" MAX DEPTH
Soap	Measured	40"x18"
	ADA	48" MAX HEIGHT, 20" MAX DEPTH
Notes		

F. C W Mount Center-345 Jefferson Street, Tipton, IN 46072



Front Door



West Sidewalk



West Sidewalk (2)



West Curb Ramp



South Sidewalk



Southwest Curb Ramp



Parking Lot Exit-Ramp A and B



Parking Lot Exit-Ramp C



Parking Lot-Ramp D



Parking Lot -Ramp E



Parking Lot-Ramp F



Parking Lot -Ramp G



Northwest Curb Ramp



East-Ramp to Alley



Alley Curb Ramp



Women's Restroom Door



Women's Restroom Sink



Women's Restroom Stalls



Women's Restroom Toilet



Men's Restroom Door



Men's Restroom Toilet



Men's Restroom Urinal



Men's Restroom Stalls



Men's Restroom Towel/Dryer



Hallway Door

Summary of Facility

For this study, access ramps, general door openings and widths and restrooms were assessed and compared to the required ADA standards. Listed below and highlighted in the tables below are the items that do not meet the ADA requirements.

ADA Non-Compliant Issues

- Curb Ramp Cross Slope (Ramp C) exceeds the maximum of 2%
- Men's Restroom Urinal Height over the maximum of 17"
- Towel/Dryer Men and Women's Restroom exceeds the maximum of 48" and 20" maximum depth

Parking Lot									
Stall Width	Measured	132"							
	ADA	96" MIN							
Aisle Width	Measured	228"							
	ADA	96" MIN							
Curb Ramp Width	Measured	60"	96"	60"	60"(32)	60"(32)	60"(32)	60"(32)	100"
	ADA	48" MIN	48" MIN	48" MIN	48" MIN	48" MIN	48" MIN	48" MIN	48" MIN
Curb Ramp Cross Slope	Measured	1.80%	0.40%	1.10%	1.70%	1.40%	4.20%	1.70%	2.70%
	ADA	2% MAX	2% MAX	2% MAX	2% MAX	2% MAX	2% MAX	2% MAX	2% MAX
Curb Ramp Running Slope	Measured	3.40%	1.40%	6.60%	5.60%	7%	4.90%	7.60%	6.60%
	ADA	8.33% MAX	8.33% MAX	8.33% MAX	8.33% MAX	8.33% MAX	8.33% MAX	8.33% MAX	8.33% MAX
Notes		East ramp to alley	Main Entrance Curb Ramp	S.E. lot exit Ramp	S.W. lot exit Ramp A	S.W. lot exit Ramp B	N.W. lot exit Ramp C	N.W. lot exit Ramp D	Handicap Curb Ramp

Building		
Ramp Running Slope	Measured	7.40%
	ADA	8.33% MAX
Ramp Cross Slope	Measured	0.50%
	ADA	2% MAX
Ramp Width	Measured	96"
	ADA	36" MIN
Ramp Handrails	Y/N	N/A
Handrail Height	Measured	N/A
	ADA	34" - 38"
Front Door	Measured	64"
	ADA	32" MIN
Fountain Spout Outlet Height	Measured	N/A
	ADA	36" MAX
Hallway Door Width	Measured	33"
	ADA	32" MIN
Notes: West side door curb ramp		

Restrooms			
		Men	Women
Door Opening	Measured	33"	33"
	ADA	32" MIN	
Stall Door	Measured	35.5"	35.5"
	ADA	32" MIN	
Stall/Bathroom Dimensions	Measured	60"x60"	60"x60"
	ADA	56" DEEP X 60" WIDE	
Grab Bars	Y/N	Y	Y
Grab Bar Height	Measured	34"	34"
	ADA	33" - 36"	
Urinals	Y/N	Y	N/A
Urinal Height	Measured	24"	N/A
	ADA	17" MAX	
Toilet Seat Height	Measured	17"	17"
	ADA	17" - 19" MIN	
Counter/Sink Height	Measured	32"	32"
	ADA	34" MAX	
Towel/Dryer	Measured	49"x17"	49"x17"
	ADA	48" MAX HEIGHT, 20" MAX DEPTH	
Soap	Measured	44"x12"	44"x12"
	ADA	48" MAX HEIGHT, 20" MAX DEPTH	
Notes			

G. Recycling Center-814 A Development Dr, Tipton, IN 46072



Parking Lot



Front Door



Ramp



Restroom Overview (1)



Restroom Paper towel (1)



Restroom Overview (2)



Restroom Door (2)



Hallway Door

Summary of Facility

For this study, access ramps, general door openings and widths and restrooms were assessed and compared to the required ADA standards. Listed below and highlighted in the tables below are the items that do not meet the ADA requirements.

ADA Non-Compliant Issues

- No ADA stalls or aisles in parking area, gravel lot
- Hallway Door Width under the minimum of 32"
- Toilet Seat height in Restroom 1 under the minimum of 17"
- Towel Dryer in Restroom 1 exceeds the 48" maximum height and 20" maximum depth

Parking Lot		
Stall Width	Measured	N/A
	ADA	96" MIN
Aisle Width	Measured	N/A
	ADA	96" MIN
Curb Ramp Width	Measured	N/A
	ADA	48" MIN
Curb Ramp Cross Slope	Measured	N/A
	ADA	2% MAX
Curb Ramp Running Slope	Measured	N/A
	ADA	8.33% MAX
Notes Gravel lot		

Building		
Ramp Running Slope	Measured	6.60%
	ADA	8.33% MAX
Ramp Cross Slope	Measured	0.40%
	ADA	2% MAX
Ramp Width	Measured	36"
	ADA	36" MIN
Ramp Handrails	Y/N	Y
Handrail Height	Measured	34"
	ADA	34" - 38"
Front Door	Measured	33.5"
	ADA	32" MIN
Fountain Spout Outlet Height	Measured	N/A
	ADA	36" MAX
Hallway Door Width	Measured	29.5"
	ADA	32" MIN

Restrooms			
		Office Bath	Shop Bath
Door Opening	Measured	29.5"	29.5"
	ADA	32" MIN	
Stall Door	Measured	N/A	N/A
	ADA	32" MIN	
Stall/Bathroom Dimensions	Measured	70"x70"	86"x60"
	ADA	56" DEEP X 60" WIDE	
Grab Bars	Y/N	N/A	N/A
Grab Bar Height	Measured	N/A	N/A
	ADA	33" - 36"	
Urinals	Y/N	N/A	N/A
Urinal Height	Measured	N/A	N/A
	ADA	17" MAX	
Toilet Seat Height	Measured	17"	15.5"
	ADA	17" - 19" MIN	
Counter/Sink Height	Measured	30.5"	30"
	ADA	34" MAX	
Towel/Dryer	Measured	26"x6"	49"x8"
	ADA	48" MAX HEIGHT, 20" MAX DEPTH	
Soap	Measured	30.5"x17"	30"x17"
	ADA	48" MAX HEIGHT, 20" MAX DEPTH	
Notes: paper towel on back of toilet		in office bath	

H. City Utilities-Berryman Pike, Tipton, IN 46072



Front Door



Curb Ramp



Restroom Door



Restroom Toilet



Restroom Sink/Towel

Summary of Facility

For this study, access ramps, general door openings and widths and Restrooms were assessed and compared to the required ADA standards. Listed below and highlighted in the tables below are the items that do not meet the ADA requirements.

ADA Non-Compliant Issues

- South Curb Ramp Cross Slope exceeds the 2% maximum

Parking Lot						
Stall Width	Measured	108"				
	ADA	96" MIN				
Aisle Width	Measured	288"				
	ADA	96" MIN				
Curb Ramp Width	Measured	70"	60"	72"	72"	72"
	ADA	48" MIN	48" MIN	48" MIN	48" MIN	48" MIN
Curb Ramp Cross Slope	Measured	0.50%	0.60%	0.90%	0.51%	2.75%
	ADA	2% MAX	2% MAX	2% MAX	2% MAX	2% MAX
Curb Ramp Running Slope	Measured	2.90%	3.40%	2.95%	1.30%	4.10%
	ADA	8.33% MAX	8.33% MAX	8.33% MAX	8.33% MAX	8.33% MAX
Notes		Inner lot Ramp	Handicap Ramp	North Curb Ramp	Middle Ramp	South Ramp

Building		
Ramp Running Slope	Measured	2.30%
	ADA	8.33% MAX
Ramp Cross Slope	Measured	0.50%
	ADA	2% MAX
Ramp Width	Measured	70"
	ADA	36" MIN
Ramp Handrails	Y/N	N/A
Handrail Height	Measured	N/A
	ADA	34" - 38"
Front Door	Measured	60"
	ADA	32" MIN
Fountain Spout Outlet Height	Measured	N/A
	ADA	36" MAX
Hallway Door Width	Measured	33"
	ADA	32" MIN
Notes		

Restrooms		
		Bath 1
Door Opening	Measured	33"
	ADA	32" MIN
Stall Door	Measured	N/A
	ADA	32" MIN
Stall/Bathroom Dimensions	Measured	90"x90"
	ADA	56" DEEP X 60" WIDE
Grab Bars	Y/N	Y
Grab Bar Height	Measured	36"
	ADA	33" - 36"
Urinals	Y/N	N/A
Urinal Height	Measured	N/A
	ADA	17" MAX
Toilet Seat Height	Measured	17"
	ADA	17" - 19" MIN
Counter/Sink Height	Measured	33"
	ADA	34" MAX
Towel/Dryer	Measured	48"x6"
	ADA	48" MAX HEIGHT, 20" MAX DEPTH
Soap	Measured	51"x9"
	ADA	48" MAX HEIGHT, 20" MAX DEPTH
Notes		

I. Mausoleum-Cemetery Road, Tipton, IN 46072



Parking Lot



Front Door



Summary of Facility

For this study, access ramps, general door openings and widths were assessed and compared to the required ADA standards. Listed below and highlighted in the tables below are the items that do not meet the ADA requirements.

ADA Non-Compliant Issues

- No ADA stalls and aisles in parking area
- No ramp handrails located on ramp
- No restrooms in building

Parking Lot		
Stall Width	Measured	N/A
	ADA	96" MIN
Aisle Width	Measured	N/A
	ADA	96" MIN
Curb Ramp Width	Measured	98"
	ADA	48" MIN
Curb Ramp Cross Slope	Measured	N/A
	ADA	2% MAX
Curb Ramp Running Slope	Measured	N/A
	ADA	8.33% MAX
Notes: Gravel lot		

Building		
Ramp Running Slope	Measured	1.80%
	ADA	8.33% MAX
Ramp Cross Slope	Measured	0.42%
	ADA	2% MAX
Ramp Width	Measured	98"
	ADA	36" MIN
Ramp Handrails	Y/N	N/A
Handrail Height	Measured	N/A
	ADA	34" - 38"
Front Door	Measured	70"
	ADA	32" MIN
Fountain Spout Outlet Height	Measured	N/A
	ADA	36" MAX
Hallway Door Width	Measured	N/A
	ADA	32" MIN
Notes		

Restrooms			
		Men	Women
Door Opening	Measured	N/A	N/A
	ADA	32" MIN	
Stall Door	Measured	N/A	N/A
	ADA	32" MIN	
Stall/Bathroom Dimensions	Measured	N/A	N/A
	ADA	56" DEEP X 60" WIDE	
Grab Bars	Y/N	N/A	N/A
Grab Bar Height	Measured	N/A	N/A
	ADA	33" - 36"	
Urinals	Y/N		N/A
Urinal Height	Measured	N/A	N/A
	ADA	17" MAX	
Toilet Seat Height	Measured	N/A	N/A
	ADA	17" - 19" MIN	
Counter/Sink Height	Measured	N/A	N/A
	ADA	34" MAX	
Towel/Dryer	Measured	N/A	N/A
	ADA	48" MAX HEIGHT, 20" MAX DEPTH	
Soap	Measured	N/A	N/A
	ADA	48" MAX HEIGHT, 20" MAX DEPTH	
Notes			

J. Wastewater Plant-E Jefferson Street, Tipton, IN 46072



Parking Lot



Front Door



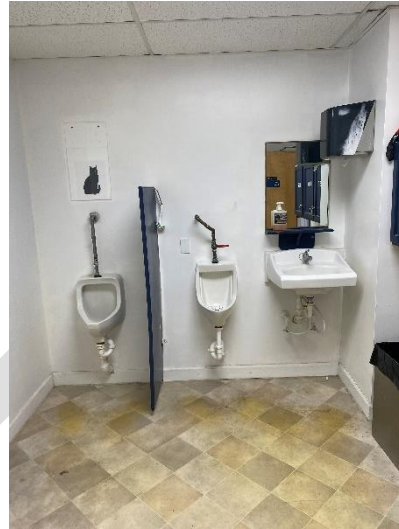
Curb Ramp



Men's Restroom Door



Men's Toilet



Men's Restroom Overview



Women's Restroom Door



Women's Restroom Overview

Summary of Facility

For this study, access ramps, general door openings and widths and Restrooms were assessed and compared to the required ADA standards. Listed below and highlighted in the tables below are the items that do not meet the ADA requirements.

ADA Non-Compliant Issues

- No ADA stall and aisle in parking area
- Men and Women's restroom door opening under the minimum of 32"
- Men's restroom stall door under the minimum of 32"
- Men's restroom stall dimensions are under the minimum 56" Deep X 60" Wide
- Men's restroom urinal height exceeds the 17" maximum
- Men's restroom counter/sink height exceeds the 34" maximum
- Men and Women's restroom Towle/Dryer exceeds the 48" maximum and 20" depth

Parking Lot		
Stall Width	Measured	N/A
	ADA	96" MIN
Aisle Width	Measured	N/A
	ADA	96" MIN
Curb Ramp Width	Measured	N/A
	ADA	48" MIN
Curb Ramp Cross Slope	Measured	N/A
	ADA	2% MAX
Curb Ramp Running Slope	Measured	N/A
	ADA	8.33% MAX
Notes: No painted lines		

Building		
Ramp Running Slope	Measured	3.15%
	ADA	8.33% MAX
Ramp Cross Slope	Measured	0.21%
	ADA	2% MAX
Ramp Width	Measured	144"
	ADA	36" MIN
Ramp Handrails	Y/N	N/A
Handrail Height	Measured	N/A
	ADA	34" - 38"
Front Door	Measured	60"
	ADA	32" MIN
Fountain Spout Outlet Height	Measured	N/A
	ADA	36" MAX
Hallway Door Width	Measured	33"
	ADA	32" MIN
Notes		

Restrooms			
		Men	Women
Door Opening	Measured	29"	29"
	ADA	32" MIN	
Stall Door	Measured	26"	N/A
	ADA	32" MIN	
Stall/Bathroom Dimensions	Measured	60"x36"	108"x94"
	ADA	56" DEEP X 60" WIDE	
Grab Bars	Y/N	N/A	N/A
Grab Bar Height	Measured	N/A	N/A
	ADA	33" - 36"	
Urinals	Y/N	Y	N/A
Urinal Height	Measured	26", 24"	N/A
	ADA	17" MAX	
Toilet Seat Height	Measured	17"	17"
	ADA	17" - 19" MIN	
Counter/Sink Height	Measured	37"	32"
	ADA	34" MAX	
Towel/Dryer	Measured	65"x11"	52"x11"
	ADA	48" MAX HEIGHT, 20" MAX DEPTH	
Soap	Measured	48"x17"	36"x5"
	ADA	48" MAX HEIGHT, 20" MAX DEPTH	
Notes			

K. Cemetery Office-Fairview Ave, Tipton, IN 46072



Parking Lot



Parking Lot (2)



Front Door



Hallway Door



Restroom Overview

Summary of Facility

For this study, access ramps, general door openings and widths and Restrooms were assessed and compared to the required ADA standards. Listed below and highlighted in the tables below are the items that do not meet the ADA requirements.

ADA Non-Compliant Issues

- No ADA stalls or aisles in parking area
- Front door under the 29" minimum standard
- Stall/restroom dimensions exceeds the 56"X60" maximum
- Town/Dryer exceeds the 48"X20" maximum

Parking Lot		
Stall Width	Measured	N/A
	ADA	96" MIN
Aisle Width	Measured	N/A
	ADA	96" MIN
Curb Ramp Width	Measured	N/A
	ADA	48" MIN
Curb Ramp Cross Slope	Measured	N/A
	ADA	2% MAX
Curb Ramp Running Slope	Measured	N/A
	ADA	8.33% MAX
Notes: gravel lot		

Building		
Ramp Running Slope	Measured	0.83%
	ADA	8.33% MAX
Ramp Cross Slope	Measured	0.02%
	ADA	2% MAX
Ramp Width	Measured	50"
	ADA	36" MIN
Ramp Handrails	Y/N	N/A
Handrail Height	Measured	N/A
	ADA	34" - 38"
Front Door	Measured	29"
	ADA	32" MIN
Fountain Spout Outlet Height	Measured	N/A
	ADA	36" MAX
Hallway Door Width	Measured	34"
	ADA	32" MIN
Notes		

Restrooms		
		Bath 1
Door Opening	Measured	33"
	ADA	32" MIN
Stall Door	Measured	N/A
	ADA	32" MIN
Stall/Bathroom Dimensions	Measured	87"x53"
	ADA	56" DEEP X 60" WIDE
Grab Bars	Y/N	Y
Grab Bar Height	Measured	36"
	ADA	33" - 36"
Urinals	Y/N	
Urinal Height	Measured	N/A
	ADA	17" MAX
Toilet Seat Height	Measured	17"
	ADA	17" - 19" MIN
Counter/Sink Height	Measured	33"
	ADA	34" MAX
Towel/Dryer	Measured	50"x4"
	ADA	48" MAX HEIGHT, 20" MAX DEPTH
Soap	Measured	33"x10"
	ADA	48" MAX HEIGHT, 20" MAX DEPTH
Notes		

L. Street Department Office-Erie Street, Tipton, IN 46072



Parking Lot



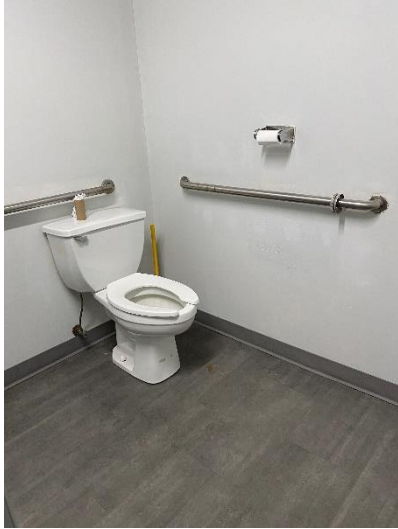
Front Door



Water Fountain



Men's Restroom Door



Men's Toilet



Men's Stall Door



Men's Urinal



Men's Sink/Towel



Women's Door



Women's Sink/Towel



Women's Toilet



Women's Stall Door

Summary of Facility

For this study, access ramps, general door openings and widths and Restrooms were assessed and compared to the required ADA standards. Listed below and highlighted in the tables below are the items that do not meet the ADA requirements.

ADA Non-Compliant Issues

- No ADA stalls or aisles in parking area
- Ramp Cross Slope exceeds the 2% maximum
- Men's restroom urinal height exceeds the 17" maximum
- Men and Women's restroom towel/dryer exceeds the 48"X20" maximum height and depth

Parking Lot		
Stall Width	Measured	N/A
	ADA	96" MIN
Aisle Width	Measured	N/A
	ADA	96" MIN
Curb Ramp Width	Measured	N/A
	ADA	48" MIN
Curb Ramp Cross Slope	Measured	N/A
	ADA	2% MAX
Curb Ramp Running Slope	Measured	N/A
	ADA	8.33% MAX
Notes: No parking lines painted		

Building		
Ramp Running Slope	Measured	2.90%
	ADA	8.33% MAX
Ramp Cross Slope	Measured	3.10%
	ADA	2% MAX
Ramp Width	Measured	94"
	ADA	36" MIN
Ramp Handrails	Y/N	N/A
Handrail Height	Measured	N/A
	ADA	34" - 38"
Front Door	Measured	32.5"
	ADA	32" MIN
Fountain Spout Outlet Height	Measured	35"
	ADA	36" MAX
Hallway Door Width	Measured	33"
	ADA	32" MIN
Notes		

Restrooms			
		Men	Women
Door Opening	Measured	33"	33"
	ADA	32" MIN	
Stall Door	Measured	34"	34"
	ADA	32" MIN	
Stall/Bathroom Dimensions	Measured	93"x60"	93"x60"
	ADA	56" DEEP X 60" WIDE	
Grab Bars	Y/N	Y	Y
Grab Bar Height	Measured	36"	36"
	ADA	33" - 36"	
Urinals	Y/N	Y	N/A
Urinal Height	Measured	23.5"	N/A
	ADA	17" MAX	
Toilet Seat Height	Measured	18"	18"
	ADA	17" - 19" MIN	
Counter/Sink Height	Measured	32"	32"
	ADA	34" MAX	
Towel/Dryer	Measured	50"x4"	50"x4"
	ADA	48" MAX HEIGHT, 20" MAX DEPTH	
Soap	Measured	32"x16"	44"x16"
	ADA	48" MAX HEIGHT, 20" MAX DEPTH	
Notes			

APPENDIX C: SIDEWALK AND CURB RAMP REVIEW

The City of Tipton, through its ADA Coordinator and hired consultant, completed a sidewalk and curb ramp review. The sidewalk and curb ramp locations are sorted by alphabetical order.

The following describes the Town's evaluation.

Sidewalks will be evaluated as follows:

- No Sidewalk
- Compliant
- Non-compliant, spot repairs needed (NC-Spot) (i.e. obstructions/defects that can be spot repaired)
- Non-compliant, full segment needs replaced (NC-Full) (non-compliant cross slope, running slope, condition, width, etc.)

Curb ramps will be evaluated as follows:

- Compliant
- Non-compliant but navigable (NC-Nav) (i.e. missing detectable warnings, non-compliant slopes, etc., but can be used by a wheelchair)
- Non-compliant, non-navigable (NC-Non-Nav) (sidewalk present)
- No curb ramp (no sidewalk present)

SIDEWALK EVALUATION				
STREET NAME	FROM	TO	LEFT	RIGHT
1st St.	Adams St.	Jefferson St.	Compliant	Compliant
260 W.	Fairgrounds	Cemetery Rd	No Sidewalk	No Sidewalk
2nd St.	Adams St.	Madison St.	NC-Spot	NC-Spot
2nd St.	Madison St.	Jefferson St.	NC-Spot	Compliant
3rd St.	Adams St.	Jefferson St.	Compliant	Compliant
4th St.	Adams St.	Madison St.	No Sidewalk	Compliant
4th St.	Madison St.	Jefferson St.	No Sidewalk	No Sidewalk
Adams St.	1st St.	Fairview Ave.	Compliant	No Sidewalk
Adams St.	4th St.	1st St.	No Sidewalk	No Sidewalk
Adams St.	Conde St.	West St.	NC-Spot	Compliant
Adams St.	East St.	Dead End	Compliant	No Sidewalk
Adams St.	Fairview Ave.	Conde St.	Compliant	NC-Spot
Adams St.	Independence	East St.	NC-Spot	Compliant
Adams St.	Main St.	Independence St.	Compliant	Compliant
Adams St.	West St.	Main St.	Compliant	NC-Spot
Armstrong St.	East St.	Oak St.	NC-Spot	Compliant
Armstrong St.	Independence	East St.	NC-Spot	NC-Spot
Armstrong St.	Maple St.	Poplar St.	NC-Spot	NC-Spot
Armstrong St.	Oak St.	Maple St.	Compliant	Compliant
Armstrong St.	Poplar St.	Ash St.	Compliant	Compliant
Ash St.	Jefferson St.	Washington St.	Compliant	No Sidewalk
Ash St.	Park Rd.	Jefferson St.	No Sidewalk	No Sidewalk
Ash St.	Washington	Hill St.	No Sidewalk	No Sidewalk
Bart Ct.	Dead End	Rosie St.	Compliant	Compliant
Berryman Pike	Erie St.	Industrial Dr.	No Sidewalk	No Sidewalk
Betty Way	Bart Ct.	Wilson St.	Compliant	Compliant
Canterbury Ct.	Dead end	Lincoln Dr.	No Sidewalk	Compliant

SIDEWALK EVALUATION				
STREET NAME	FROM	TO	LEFT	RIGHT
Cleveland St.	Independence	Maple St.	Compliant	No Sidewalk
Cleveland St.	Main St.	Independence St.	No Sidewalk	No Sidewalk
Cleveland St.	Maple St.	Poplar St.	No Sidewalk	No Sidewalk
Cleveland St.	Poplar St.	Ash St.	Compliant	No Sidewalk
Columbia St.	Dearborn St.	Vine St.	NC-Spot	NC-Spot
Columbia St.	Jefferson St.	Washington St.	NC-Spot	Compliant
Columbia St.	North St.	Dearborn St.	NC-Spot	Compliant
Columbia St.	Washington	North St.	Compliant	Compliant
Conde St.	Adams St.	Madison St.	Compliant	NC-Spot
Conde St.	Dearborn St.	Erie St.	NC-Spot	NC-Full
Conde St.	Jackson St.	Adams St.	NC-Spot	Compliant
Conde St.	Jefferson St.	Washington St.	Compliant	NC-Spot
Conde St.	Madison St.	Jefferson St.	Compliant	Compliant
Conde St.	North St.	Dearborn St.	NC-Spot	NC-Spot
Conde St.	South St.	Jackson St.	Compliant	No Sidewalk
Conde St.	Washington	North St.	Compliant	Compliant
Court St.	Adams St.	Madison St.	No Sidewalk	Compliant
Court St.	Madison St.	Jefferson St.	Compliant	Compliant
Daniels St.	Main St.	Independence St.	No Sidewalk	No Sidewalk
Dearborn St.	Columbia	Green St.	Compliant	Compliant
Dearborn St.	Kentucky Ave.	Main St.	Compliant	Compliant
Dearborn St.	Sweetland	Kentucky Ave.	Compliant	No Sidewalk
Dearborn St.	Taft St.	Sweetland Ave.	No Sidewalk	No Sidewalk
Dearborn St.	Wilson St.	Taft St.	No Sidewalk	No Sidewalk
Dehl St.	Dead End	Jefferson St.	NC-Spot	NC-Spot
Douglas St.	East St.	Oak St.	No Sidewalk	No Sidewalk
East St.	Adams St.	Madison St.	Compliant	NC-Spot

SIDEWALK EVALUATION				
STREET NAME	FROM	TO	LEFT	RIGHT
East St.	Cleveland St.	Harrison St.	Compliant	NC-Spot
East St.	Douglas St.	North St.	Compliant	NC-Spot
East St.	Harrison St.	Hamilton St.	Compliant	Compliant
East St.	Jefferson St.	Washington St.	Compliant	NC-Spot
East St.	Madison St.	Jefferson St.	Compliant	Compliant
East St.	North St.	Valley St.	NC-Spot	NC-Spot
East St.	South St.	Adams St.	Compliant	Compliant
East St.	Valley St.	Cleveland St.	Compliant	Compliant
East St.	Washington	Douglas St.	NC-Spot	Compliant
Emberton Dr.	Sweetland	Mitchell St.	No Sidewalk	No Sidewalk
Erie St.	Berryman	Main St.	No Sidewalk	No Sidewalk
Fairview St.	Jackson St.	Adams St.	NC-Spot	NC-Spot
Fairview St.	South St.	Jackson St.	Compliant	Compliant
Green St.	Jefferson St.	Vine St.	Compliant	Compliant
Green St.	Vine St.	Erie St.	No Sidewalk	No Sidewalk
Hall St.	Maple St.	Ash St.	No Sidewalk	No Sidewalk
Hall St.	Oak St.	Maple St.	Compliant	No Sidewalk
Hall St.	Terrace Ct.	Canterbury Ct.	NC-Full	Compliant
Hamilton St.	Main St.	Mill St.	No Sidewalk	No Sidewalk
Harrison St.	Main St.	Ash St.	No Sidewalk	No Sidewalk
Hill St.	Independence	Ash St.	No Sidewalk	No Sidewalk
Hill St.	Main St.	Independence St.	NC-Full	NC-Full
Independence St.	Adams St.	Madison St.	Compliant	NC-Spot
Independence St.	Harrison St.	Hamilton St.	NC-Spot	Compliant
Independence St.	Madison St.	Washington St.	Compliant	Compliant
Independence St.	North St.	Harrison St.	Compliant	Compliant
Independence St.	South St.	Adams St.	Compliant	Compliant

SIDEWALK EVALUATION				
STREET NAME	FROM	TO	LEFT	RIGHT
Independence St.	Washington	North St.	NC-Spot	NC-Spot
Jackson St.	Dead End	Fairview Ave.	Compliant	No Sidewalk
Jackson St.	Fairview Ave.	Main St.	NC-Spot	NC-Spot
Jackson St.	Golf course	Dead End	No Sidewalk	No Sidewalk
Jackson St.	Independence	East St.	NC-Spot	NC-Spot
Jackson St.	Main St.	Independence St.	Compliant	Compliant
Jefferson St.	Ash St.	S. 25 W.	Compliant	No Sidewalk
Jefferson St.	Sweetland	Ash St.	Compliant	Compliant
Jefferson St.	Taft St.	Sweetland Ave.	Compliant	Compliant
Kentucky Ave.	Dearborn St.	Vine St.	No Sidewalk	Compliant
Kentucky Ave.	Jefferson St.	Washington St.	NC-Spot	Compliant
Kentucky Ave.	North St.	Dearborn St.	NC-Spot	NC-Spot
Kentucky Ave.	Walnut St.	North St.	Compliant	NC-Spot
Kentucky Ave.	Washington	Walnut St.	Compliant	Compliant
Lincoln Dr.	Ash St.	Canterbury Ct.	Compliant	No Sidewalk
Madison St.	1st St.	Conde St.	Compliant	Compliant
Madison St.	2nd St.	1st St.	Compliant	NC-Spot
Madison St.	4th St.	2nd St.	Compliant	Compliant
Madison St.	Conde St.	West St.	NC-Spot	NC-Spot
Madison St.	East St.	Dead End	Compliant	Compliant
Madison St.	Independence	East St.	NC-Spot	Compliant
Madison St.	West St.	Independence St.	Compliant	Compliant
Main St.	Cleveland St.	Hamilton St.	Compliant	Compliant
Main St.	Dearborn St.	Erie St.	NC-Spot	NC-Spot
Main St.	Erie St.	Cleveland St.	NC-Spot	Compliant
Main St.	Fairgrounds	Walnut St.	Compliant	Compliant
Main St.	Hamilton St.	Market Rd.	NC-Spot	NC-Spot

SIDEWALK EVALUATION				
STREET NAME	FROM	TO	LEFT	RIGHT
Main St.	Walnut St.	Dearborn St.	Compliant	NC-Spot
Maple St.	Armstrong St.	Mound St.	NC-Spot	Compliant
Maple St.	Cleveland St.	Harrison St.	Compliant	Compliant
Maple St.	Harrison St.	Hill St.	No Sidewalk	No Sidewalk
Maple St.	Hill St.	Dead end	Compliant	No Sidewalk
Maple St.	Jefferson St.	Washington St.	Compliant	Compliant
Maple St.	Mound St.	Valley St.	NC-Spot	NC-Spot
Maple St.	North St.	Armstrong St.	NC-Spot	NC-Spot
Maple St.	Sycamore St.	North St.	NC-Spot	Compliant
Maple St.	Valley St.	Cleveland St.	Compliant	No Sidewalk
Maple St.	Washington	Sycamore St.	NC-Spot	NC-Spot
Mill St.	Armstrong St.	Mound St.	NC-Spot	Compliant
Mill St.	Cleveland St.	Hamilton St.	Compliant	Compliant
Mill St.	Douglas St.	North St.	Compliant	NC-Spot
Mill St.	Jefferson St.	Washington St.	Compliant	NC-Spot
Mill St.	Mound St.	Railroad crossing	Compliant	Compliant
Mill St.	North St.	Armstrong St.	NC-Spot	NC-Spot
Mill St.	Railroad	Cleveland St.	No Sidewalk	No Sidewalk
Mill St.	Washington	Douglas St.	Compliant	Compliant
Mitchell St.	Walnut St.	North St.	No Sidewalk	No Sidewalk
Mound St.	East St.	Oak St.	No Sidewalk	No Sidewalk
Mound St.	Independence	East St.	Compliant	No Sidewalk
Mound St.	Oak St.	Poplar St.	No Sidewalk	Compliant
Mound St.	Poplar St.	Ash St.	No Sidewalk	No Sidewalk
North St.	Kentucky Ave.	Ash St.	Compliant	Compliant
North St.	Shirley Dr.	Sweetland Ave.	No Sidewalk	No Sidewalk
North St.	Sweetland	Kentucky Ave.	No Sidewalk	Compliant

SIDEWALK EVALUATION				
STREET NAME	FROM	TO	LEFT	RIGHT
Oak St.	Armstrong St.	Mound St.	Compliant	Compliant
Oak St.	Cleveland St.	Harrison St.	NC-Full	Compliant
Oak St.	Dead end	Cleveland St.	No Sidewalk	NC-Full
Oak St.	Harrison St.	Dead end	No Sidewalk	No Sidewalk
Oak St.	Jefferson St.	Washington St.	Compliant	NC-Spot
Oak St.	Mound St.	Valley St.	Compliant	NC-Spot
Oak St.	North St.	Armstrong St.	NC-Spot	NC-Spot
Oak St.	Sycamore St.	North St.	NC-Spot	Compliant
Oak St.	Valley St.	Dead end	No Sidewalk	No Sidewalk
Oak St.	Washington	Sycamore St.	NC-Spot	NC-Spot
Park Rd.	Main St.	Ash St.	No Sidewalk	Compliant
Parkview Ct. Dr.	Park Rd.	Dead end	No Sidewalk	No Sidewalk
Poplar St.	Armstrong St.	Valley St.	Compliant	Compliant
Poplar St.	Hall St.	Armstrong St.	NC-Spot	Compliant
Poplar St.	Harrison St.	Hill St.	Compliant	Compliant
Poplar St.	Hill St.	Dead end	No Sidewalk	No Sidewalk
Poplar St.	Jefferson St.	Hall St.	Compliant	Compliant
Poplar St.	Valley St.	Harrison St.	NC-Spot	NC-Spot
Rosewood Dr.	Park Rd.	dead end	No Sidewalk	No Sidewalk
Rosie St.	Bart Ct.	Wilson St.	Compliant	Compliant
Sheffield Ct.	Hall St.	Lincoln Dr.	Compliant	Compliant
Shirley Dr.	Walnut St.	North St.	No Sidewalk	No Sidewalk
South St.	Conde St.	West St.	Compliant	NC-Spot
South St.	Fairview Ave.	Conde St.	Compliant	No Sidewalk
South St.	Independence	East St.	No Sidewalk	No Sidewalk
South St.	Main St.	Independence St.	NC-Spot	NC-Full
South St.	West St.	Main St.	Compliant	No Sidewalk

SIDEWALK EVALUATION				
STREET NAME	FROM	TO	LEFT	RIGHT
Park Rd.	Main St.	Ash St.	No Sidewalk	Compliant
Parkview Ct. Dr.	Park Rd.	Dead end	No Sidewalk	No Sidewalk
Poplar St.	Armstrong St.	Valley St.	Compliant	Compliant
Poplar St.	Hall St.	Armstrong St.	NC-Spot	Compliant
Poplar St.	Harrison St.	Hill St.	Compliant	Compliant
Poplar St.	Hill St.	Dead end	No Sidewalk	No Sidewalk
Poplar St.	Jefferson St.	Hall St.	Compliant	Compliant
Poplar St.	Valley St.	Harrison St.	NC-Spot	NC-Spot
Rosewood Dr.	Park Rd.	dead end	No Sidewalk	No Sidewalk
Rosie St.	Bart Ct.	Wilson St.	Compliant	Compliant
Sheffield Ct.	Hall St.	Lincoln Dr.	Compliant	Compliant
Shirley Dr.	Walnut St.	North St.	No Sidewalk	No Sidewalk
South St.	Conde St.	West St.	Compliant	NC-Spot
South St.	Fairview Ave.	Conde St.	Compliant	No Sidewalk
South St.	Independence	East St.	No Sidewalk	No Sidewalk
South St.	Main St.	Independence St.	NC-Spot	NC-Full
South St.	West St.	Main St.	Compliant	No Sidewalk
Sweetland Ave.	Jefferson St.	Walnut St.	No Sidewalk	No Sidewalk
Sweetland Ave.	North St.	Dearborn St.	No Sidewalk	No Sidewalk
Sweetland Ave.	Walnut St.	North St.	No Sidewalk	Compliant
Sycamore St.	Oak St.	Ash St.	Compliant	Compliant
Taft St.	Jefferson St.	Dearborn St.	No Sidewalk	No Sidewalk
Terrace Ct.	Hall St.	Lincoln Dr.	Compliant	Compliant
Valley St.	Independence	Poplar St.	No Sidewalk	No Sidewalk
Valley St.	Poplar St.	Ash St.	No Sidewalk	Compliant
Vine St.	Kentucky Ave.	Green St.	No Sidewalk	NC-Spot
Walnut St.	Conde St.	Main St.	NC-Spot	Compliant

SIDEWALK EVALUATION				
STREET NAME	FROM	TO	LEFT	RIGHT
Walnut St.	Kentucky Ave.	Conde St.	Compliant	Compliant
Walnut St.	Sweetland	Kentucky Ave.	Compliant	No Sidewalk
Walnut St.	Wilson St.	Taft St.	No Sidewalk	No Sidewalk
Washington St.	Conde St.	Main St.	NC-Spot	NC-Spot
Washington St.	Independence	Oak St.	Compliant	NC-Spot
Washington St.	Main St.	Independence St.	Compliant	Compliant
Washington St.	Maple St.	Poplar St.	NC-Spot	Compliant
Washington St.	Oak St.	Maple St.	Compliant	Compliant
Washington St.	Poplar St.	Ash St.	Compliant	Compliant
Washington St.	Sweetland	Conde St.	Compliant	Compliant
West St.	Adams St.	Madison St.	NC-Spot	NC-Spot
West St.	Dearborn St.	Erie St.	Compliant	NC-Spot
West St.	Jefferson St.	Washington St.	NC-Spot	Compliant
West St.	Madison St.	Jefferson St.	Compliant	Compliant
West St.	North St.	Dearborn St.	NC-Spot	Compliant
West St.	South St.	Adams St.	Compliant	Compliant
West St.	Washington	North St.	Compliant	Compliant
Wilson St.	Jefferson St.	Dearborn St.	No Sidewalk	No Sidewalk

CURB RAMP EVALUATION				
STREET INTERSECTION	NW	NE CORNER	SW	SE CORNER
1st St./Adams St.	Compliant	Compliant	No Curb	No Curb
1st St./Jefferson St.	No Curb	No Curb	Compliant	Compliant
1st St./Madison St.	Compliant	Compliant	Compliant	Compliant
2nd St./Adams St.	NC-Nav	NC-Nav	No Curb	No Curb
2nd St./Jefferson St.	No Curb	No Curb	Compliant	Compliant
2nd St./Madison St.	Compliant	Compliant	Compliant	Compliant
3rd St./Adams St.	Compliant	Compliant	No Curb	No Curb
3rd St./Jefferson St.	No Curb	No Curb	Compliant	Compliant
3rd St./Madison St.	Compliant	Compliant	Compliant	Compliant
4th St./ Jefferson St.	No Curb	NC-Nav	Compliant	Compliant
4th St./Adams St.	No Curb	NC-Nav	No Curb	No Curb
4th St./Madison St.	No Curb	NC-Non-	No Curb	NC-Non-
Ash St./Armstrong St.	NC-Non-	NC-Non-	No Curb	No Curb
Ash St./Cleveland St.	Compliant	No Curb	No Curb	No Curb
Ash St./Hall St.	No Curb	No Curb	No Curb	No Curb
Ash St./Harrison St.	No Curb	No Curb	No Curb	No Curb
Ash St./Hill St.	No Curb	No Curb	No Curb	No Curb
Ash St./Jefferson St.	Compliant	No Curb	Compliant	No Curb
Ash St./Lincoln Dr.	No Curb	No Curb	No Curb	No Curb
Ash St./Mound St.	No Curb	No Curb	No Curb	No Curb
Ash St./North St.	Compliant	No Curb	Compliant	No Curb
Ash St./Sycamore St.	Compliant	No Curb	Compliant	No Curb
Ash St./Valley St.	NC-Nav	No Curb	NC-Non-	No Curb
Ash St./Washington St.	NC-Nav	No Curb	NC-Nav	No Curb
Barr Ct./Betty way	NC-Nav	NC-Nav	NC-Nav	NC-Nav
Barr Ct./Rosie St.	NC-Nav	NC-Nav	NC-Nav	NC-Nav
Canterbury Ct./Lincoln Dr.	NC-Nav	NC-Nav	No Curb	NC-Non-

CURB RAMP EVALUATION				
STREET INTERSECTION	NW	NE CORNER	SW	SE CORNER
Columbia ave./Dearborn St.	Compliant	Compliant	Compliant	Compliant
Columbia ave./Jefferson St.	Compliant	Compliant	No Curb	No Curb
Columbia ave./North St.	Compliant	Compliant	Compliant	Compliant
Columbia ave./Vine St.	No Curb	No Curb	Compliant	Compliant
Columbia ave./Walnut St.	Compliant	Compliant	Compliant	Compliant
Columbia ave./Washington	Compliant	Compliant	Compliant	Compliant
Conde St./Adams St.	Compliant	Compliant	Compliant	Compliant
Conde St./Dearborn St.	Compliant	Compliant	Compliant	Compliant
Conde St./Erie St.	No Curb	No Curb	NC-Nav	NC-Nav
Conde St./Jackson St.	NC-Non-	Compliant	NC-Nav	NC-Nav
Conde St./Jefferson St.	Compliant	Compliant	Compliant	Compliant
Conde St./Madison St.	Compliant	Compliant	Compliant	Compliant
Conde St./South St.	Compliant	Compliant	No Curb	No Curb
Conde St./Walnut St.	Compliant	Compliant	Compliant	Compliant
Conde St./Washington St.	NC-Nav	NC-Non-	NC-Nav	NC-Nav
Conde St./North St.	Compliant	Compliant	Compliant	Compliant
Court St./Jefferson St.	Compliant	Compliant	Compliant	Compliant
Court St./Madison St.	Compliant	Compliant	NC-Nav	NC-Nav
CR 200 S./S. 100 W.	No Curb	No Curb	NC-Nav	No Curb
Dehl St./Jefferson St.	Compliant	Compliant	Compliant	Compliant
East St./Adams St.	Compliant	Compliant	Compliant	Compliant
East St./Armstrong St.	Compliant	Compliant	Compliant	Compliant
East St./Cleveland St.	Compliant	Compliant	Compliant	Compliant
East St./Douglas St.	NC-Nav	NC-Nav	NC-Nav	Compliant
East St./Hamilton St.	No Curb	No Curb	NC-Non-	NC-Non-
East St./Harrison St.	Compliant	Compliant	Compliant	Compliant
East St./Hill St.	Compliant	Compliant	Compliant	Compliant

CURB RAMP EVALUATION				
STREET INTERSECTION	NW	NE CORNER	SW	SE CORNER
East St./Jackson St.	Compliant	Compliant	Compliant	Compliant
East St./Jefferson St.	Compliant	Compliant	Compliant	Compliant
East St./Madison St.	Compliant	Compliant	Compliant	Compliant
East St./North St.	Compliant	Compliant	Compliant	Compliant
East St./Railroad crossing	NC-Nav	NC-Non-	NC-Nav	NC-Nav
East St./Round St.	Compliant	Compliant	Compliant	Compliant
East St./South St.	Compliant	Compliant	No Curb	No Curb
East St./Valley St.	Compliant	Compliant	Compliant	Compliant
East St./Washington St.	NC-Nav	Compliant	NC-Nav	NC-Nav
Fairview Ave./Adams St.	Compliant	Compliant	NC-Nav	Compliant
Fairview Ave./Jackson St.	Compliant	Compliant	Compliant	Compliant
Fairview Ave./South St.	NC-Nav	Compliant	No Curb	No Curb
Green St./Dearborn St.	Compliant	Compliant	Compliant	Compliant
Green St./Erie St.	No Curb	No Curb	No Curb	No Curb
Green St./Jefferson St.	Compliant	Compliant	No Curb	No Curb
Green St./North St.	Compliant	Compliant	Compliant	Compliant
Green St./Vine St.	No Curb	No Curb	Compliant	No Curb
Green St./Walnut St.	Compliant	Compliant	Compliant	Compliant
Green St./Washington St.	Compliant	Compliant	Compliant	Compliant
Independence St./Adams St.	Compliant	Compliant	Compliant	Compliant
Independence St./Armstrong	Compliant	Compliant	Compliant	Compliant
Independence St./Cleveland	Compliant	Compliant	Compliant	Compliant
Independence St./Daniels St.	Compliant	Compliant	Compliant	NC-Nav
Independence St./Hamilton	No Curb	No Curb	Compliant	Compliant
Independence St./Harrison	Compliant	Compliant	Compliant	Compliant
Independence St./Hill St.	Compliant	Compliant	Compliant	Compliant
Independence St./Jackson St.	Compliant	Compliant	Compliant	Compliant

CURB RAMP EVALUATION				
STREET INTERSECTION	NW	NE CORNER	SW	SE CORNER
Independence St./Jefferson	Compliant	Compliant	Compliant	Compliant
Independence St./Madison	Compliant	Compliant	Compliant	Compliant
Independence St./Mound St.	Compliant	Compliant	Compliant	Compliant
Independence St./North St.	Compliant	Compliant	Compliant	Compliant
Independence St./Railroad	NC-Non-	Compliant	NC-Nav	NC-Nav
Independence St./South St.	Compliant	Compliant	NC-Nav	No Curb
Independence St./Valley St.	Compliant	Compliant	Compliant	Compliant
Independence	NC-Nav	NC-Nav	NC-Nav	NC-Nav
Kentucky Ave./Dearborn St.	Compliant	Compliant	No Curb	Compliant
Kentucky Ave./Jefferson St.	Compliant	Compliant	No Curb	No Curb
Kentucky Ave./North St.	Compliant	Compliant	Compliant	Compliant
Kentucky Ave./Vine St.	No Curb	No Curb	No Curb	NC-Non-
Kentucky Ave./Walnut St.	Compliant	Compliant	Compliant	Compliant
Kentucky Ave./Washington	Compliant	Compliant	Compliant	Compliant
Main St./Adams St.	Compliant	Compliant	Compliant	Compliant
Main St./Cleveland St.	Compliant	Compliant	Compliant	Compliant
Main St./Daniels St.	Compliant	Compliant	Compliant	Compliant
Main St./Dearborn St.	Compliant	Compliant	Compliant	Compliant
Main St./Erie St.	Compliant	Compliant	Compliant	Compliant
Main St./Fairgrounds Rd.	Compliant	Compliant	No Curb	No Curb
Main St./Hamilton St.	Compliant	Compliant	Compliant	Compliant
Main St./Harrison St.	Compliant	Compliant	Compliant	Compliant
Main St./Hill St.	Compliant	Compliant	Compliant	Compliant
Main St./Jackson St.	Compliant	Compliant	Compliant	Compliant
Main St./Jefferson St.	Compliant	Compliant	Compliant	Compliant
Main St./Madison St.	Compliant	Compliant	Compliant	Compliant
Main St./Market	No Curb	No Curb	Compliant	No Curb

CURB RAMP EVALUATION				
STREET INTERSECTION	NW	NE CORNER	SW	SE CORNER
Main St./North St.	Compliant	Compliant	Compliant	Compliant
Main St./Park Rd.	Compliant	Compliant	Compliant	Compliant
Main St./Railroad crossing	NC-Nav	NC-Nav	NC-Nav	NC-Nav
Main St./South St.	Compliant	Compliant	Compliant	Compliant
Main St./Walnut St.	Compliant	Compliant	Compliant	Compliant
Main St./Washington St.	Compliant	Compliant	Compliant	Compliant
Maple St./Armstrong St.	Compliant	Compliant	Compliant	Compliant
Maple St./Cleveland St.	Compliant	Compliant	Compliant	No Curb
Maple St./Hall St.	Compliant	Compliant	Compliant	Compliant
Maple St./Harrison St.	Compliant	Compliant	Compliant	Compliant
Maple St./Hill St.	Compliant	No Curb	Compliant	Compliant
Maple St./Jefferson St.	Compliant	Compliant	Compliant	Compliant
Maple St./Mound St.	Compliant	NC-Nav	Compliant	Compliant
Maple St./North St.	Compliant	Compliant	Compliant	Compliant
Maple St./Railroad crossing	NC-Non-	No Curb	NC-Non-	No Curb
Maple St./Sycamore St.	Compliant	Compliant	Compliant	Compliant
Maple St./Valley St.	Compliant	Compliant	Compliant	Compliant
Maple St./Washington St.	Compliant	Compliant	Compliant	Compliant
Mill St./Armstrong St.	Compliant	Compliant	NC-Nav	NC-Nav
Mill St./Cleveland St.	Compliant	Compliant	NC-Nav	No Curb
Mill St./Douglas Dr.	NC-Non-	NC-Non-	NC-Non-	NC-Nav
Mill St./Hamilton St.	No Curb	No Curb	No Curb	NC-Nav
Mill St./Harrison St.	Compliant	Compliant	Compliant	Compliant
Mill St./Hill St.	Compliant	Compliant	Compliant	Compliant
Mill St./Jefferson St.	Compliant	Compliant	Compliant	Compliant
Mill St./Mound St.	Compliant	Compliant	Compliant	Compliant
Mill St./North St.	Compliant	Compliant	Compliant	Compliant

CURB RAMP EVALUATION				
STREET INTERSECTION	NW	NE CORNER	SW	SE CORNER
Mill St./Railroad crossing	No Curb	No Curb	Compliant	Compliant
Mill St./Valley St.	Compliant	Compliant	Compliant	Compliant
Mill St./Washington St.	Compliant	Compliant	Compliant	NC-Nav
Mitchell Dr./Emberton Dr.	No Curb	No Curb	No Curb	No Curb
Mitchell Dr./North St.	No Curb	No Curb	No Curb	No Curb
Oak St./Armstrong St.	Compliant	Compliant	Compliant	Compliant
Oak St./Cleveland St.	Compliant	Compliant	No Curb	No Curb
Oak St./Douglas St.	NC-Non-	Compliant	NC-Non-	Compliant
Oak St./Hall St.	Compliant	NC-Nav	Compliant	NC-Non-
Oak St./Harrison St.	No Curb	No Curb	No Curb	NC-Non-
Oak St./Hill St.	No Curb	No Curb	No Curb	No Curb
Oak St./Jefferson St.	Compliant	Compliant	Compliant	Compliant
Oak St./Mound St.	Compliant	Compliant	Compliant	Compliant
Oak St./North St.	Compliant	Compliant	Compliant	Compliant
Oak St./Sycamore St.	Compliant	Compliant	Compliant	Compliant
Oak St./Valley St.	No Curb	No Curb	Compliant	Compliant
Oak St./Washington St.	Compliant	Compliant	Compliant	Compliant
Parkview St./Park Rd.	No Curb	No Curb	Compliant	Compliant
Poplar St./Armstrong St.	Compliant	Compliant	Compliant	Compliant
Poplar St./Cleveland St.	Compliant	Compliant	No Curb	No Curb
Poplar St./Hall St.	Compliant	Compliant	Compliant	Compliant
Poplar St./Hall St.	NC-Non-	NC-Non-	NC-Non-	NC-Non-
Poplar St./Harrison St.	Compliant	Compliant	Compliant	Compliant
Poplar St./Jefferson St.	Compliant	Compliant	Compliant	Compliant
Poplar St./Mound St.	NC-Non-	NC-Nav	NC-Nav	NC-Nav
Poplar St./North St.	Compliant	Compliant	Compliant	Compliant
Poplar St./Sycamore St.	Compliant	Compliant	Compliant	Compliant

CURB RAMP EVALUATION				
STREET INTERSECTION	NW	NE CORNER	SW	SE CORNER
Poplar St./Valley St.	NC-Nav	NC-Nav	NC-Nav	NC-Nav
Poplar St./Washington St.	Compliant	Compliant	Compliant	Compliant
Rosewood Dr./Park Rd.	No Curb	No Curb	NC-Nav	NC-Nav
Sheffield Ct./Hall St.	NC-Nav	NC-Nav	NC-Nav	NC-Nav
Sheffield Ct./Lincoln Dr.	NC-Nav	NC-Nav	No Curb	No Curb
Sweetland Ave./Dearborn St.	No Curb	NC-Nav	No Curb	No Curb
Sweetland Ave./Emberton	No Curb	No Curb	No Curb	No Curb
Sweetland Ave./North St.	No Curb	No Curb	No Curb	Compliant
Sweetland Ave./Walnut St.	No Curb	Compliant	No Curb	No Curb
Sweetland Ave./Washington	No Curb	No Curb	No Curb	No Curb
Taft St./Dearborn St.	No Curb	No Curb	No Curb	No Curb
Taft St./Jefferson St.	No Curb	NC-Non-	NC-Non-	NC-Non-
Taft St./North St.	No Curb	No Curb	No Curb	No Curb
Taft St./Shirley Dr.	No Curb	No Curb	No Curb	No Curb
Terrace Ct./Hall St.	NC-Non-	NC-Non-	NC-Nav	NC-Nav
Terrace Ct./Lincoln Dr.	NC-Nav	NC-Nav	NC-Nav	NC-Nav
West St./Adams St.	Compliant	Compliant	Compliant	Compliant
West St./Dearborn St.	Compliant	Compliant	Compliant	Compliant
West St./Erie St.	No Curb	No Curb	NC-Nav	NC-Non-
West St./Jackson St.	NC-Non-	NC-Nav	NC-Nav	NC-Nav
West St./Jefferson St.	Compliant	Compliant	Compliant	Compliant
West St./Madison St.	NC-Nav	NC-Nav	NC-Nav	NC-Nav
West St./North St.	Compliant	Compliant	Compliant	Compliant
West St./South St.	Compliant	Compliant	NC-Nav	No Curb
West St./Walnut St.	Compliant	Compliant	Compliant	NC-Nav
West St./Washington St.	NC-Nav	NC-Nav	NC-Nav	Compliant
Wilson St./Betty way	NC-Nav	No Curb	NC-Nav	No Curb

[illegible]